

N 88°26'38"E 645.22'

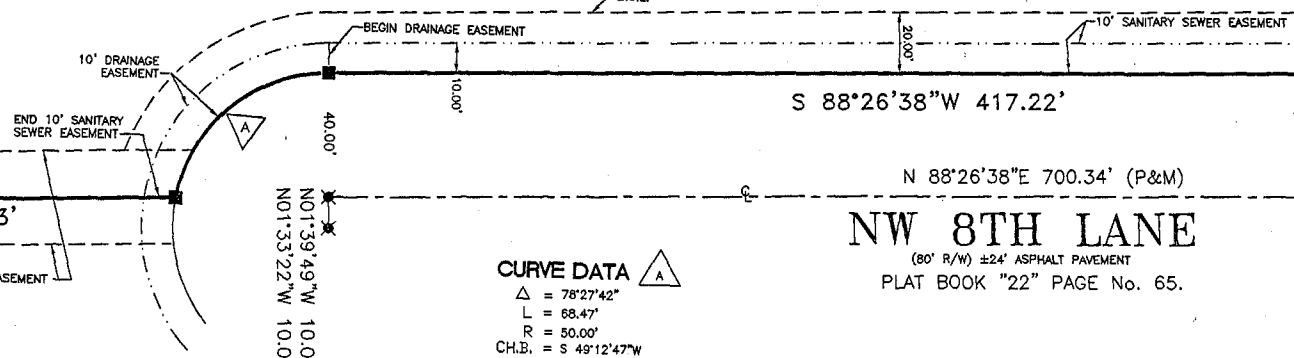
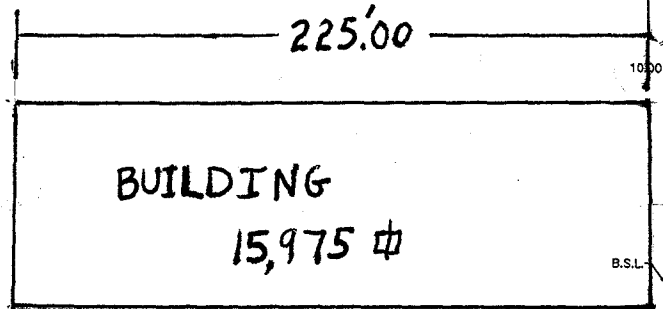
N 02°18'22"W 235.02'

S 01°33'22"E 195.00'



LOT 1 - ±3.048 ACRES

NOTE: THIS LOT SHALL HAVE AN INDIVIDUAL SANITARY SEWAGE PUMP AND AN ASSOCIATED FORCE MAIN TO BE PRIVATELY MAINTAINED TO THE POINT WHERE THEY CONNECT TO CITY OF NEWBERRY GRAVITY SEWAGE SYSTEM.




S 88°26'38"W 417.22'

N 88°26'38"E 700.34' (P&M)

S 88°26'38"W 175.93'

NW 8TH LANE

(80' R/W) ±24' ASPHALT PAVEMENT  
PLAT BOOK "22" PAGE No. 65.

**CURVE DATA**   
Δ = 78°27'42"  
L = 68.47'  
R = 50.00'  
CH.B. = S 49°12'47"W  
CH.D. = 63.24'

N01°39'49"W 10.02'(M)  
N01°33'22"W 10.00'(P)

LOT 9  
NEWBERRY COMMERCIAL PARK  
PLAT BOOK "22" PAGE No. 65.